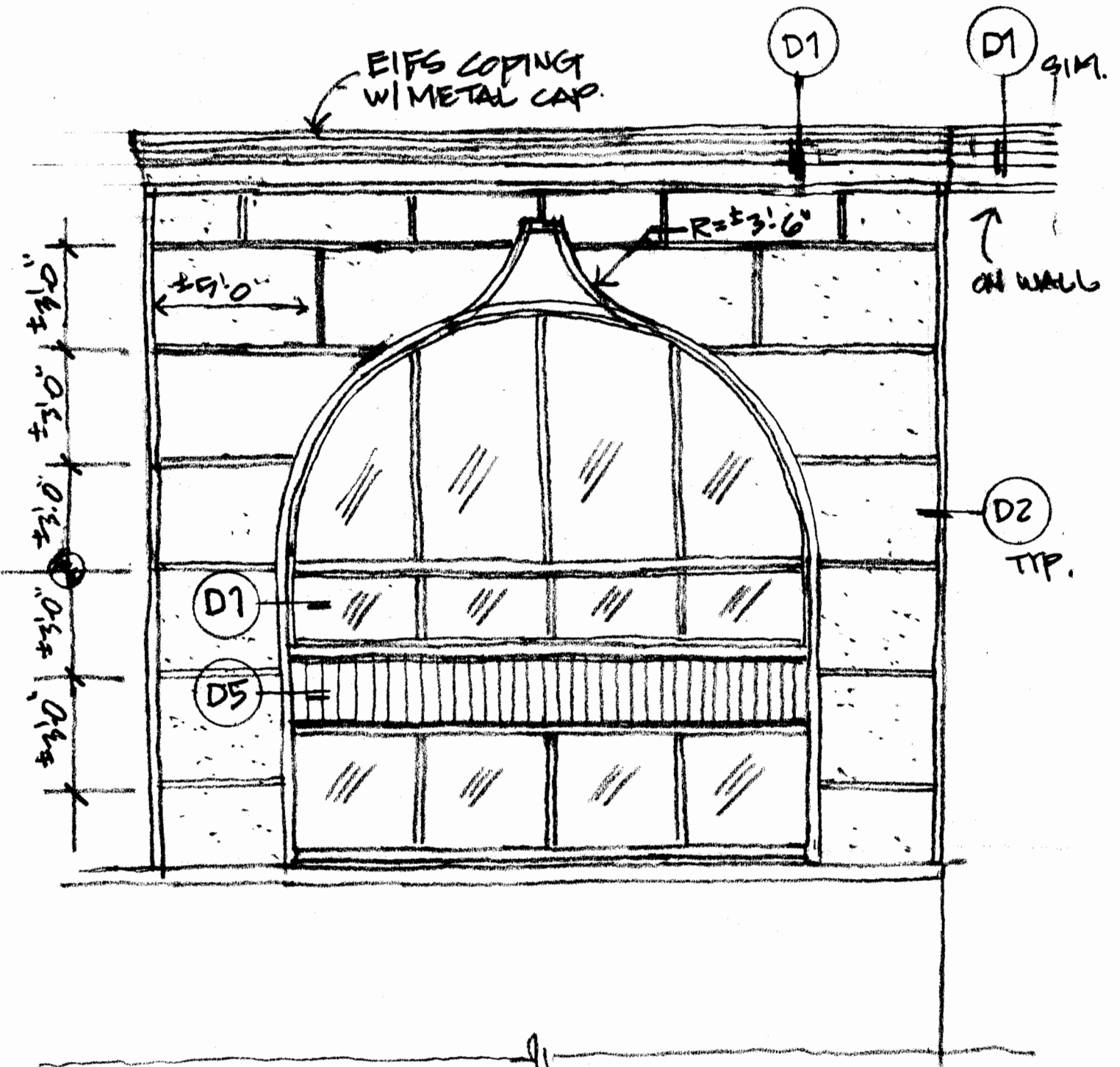


PART WEST ARCH ELEVATION

$\frac{1}{4}'' = 1'-0''$

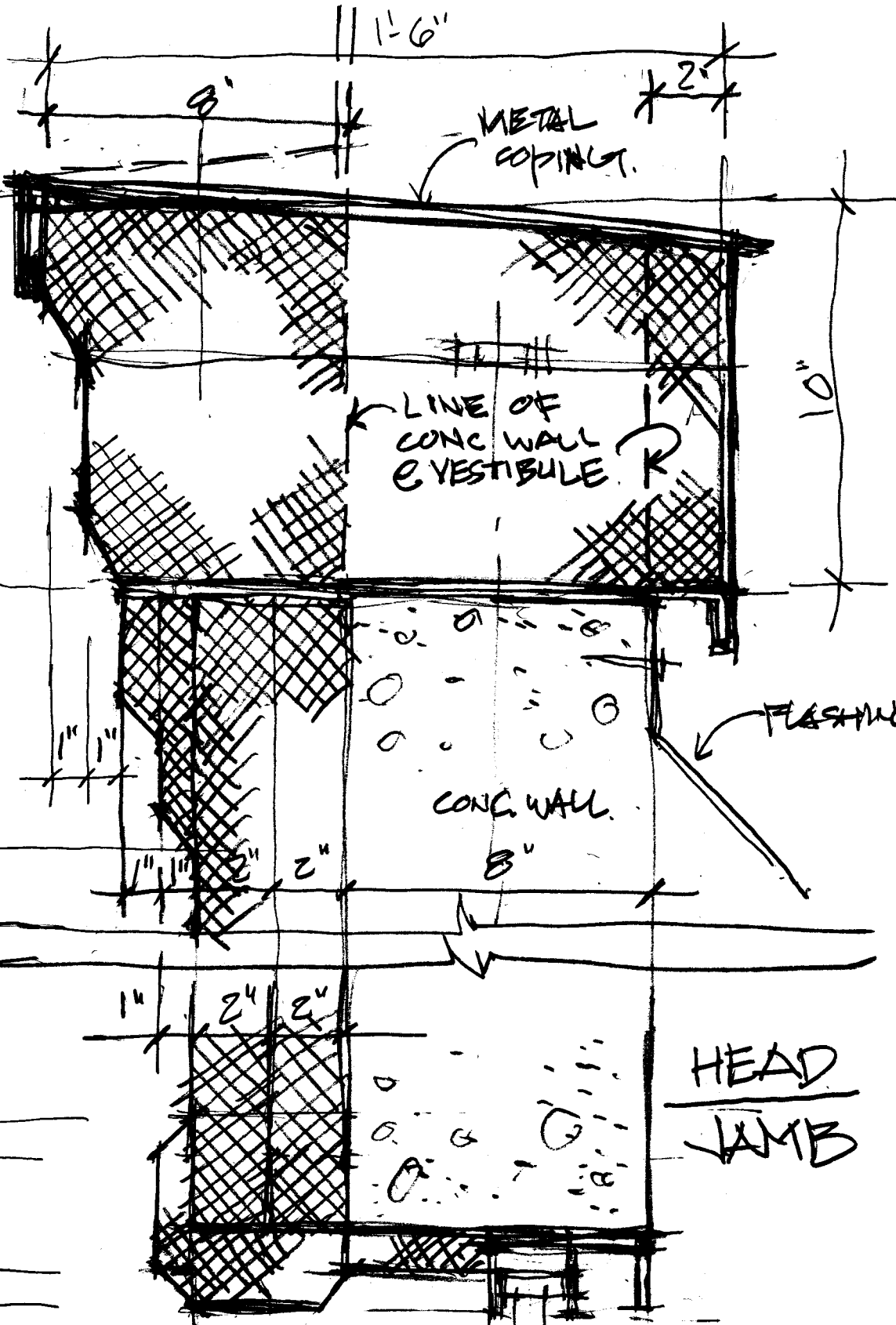
(1)



EAST ARCH ELEVATION

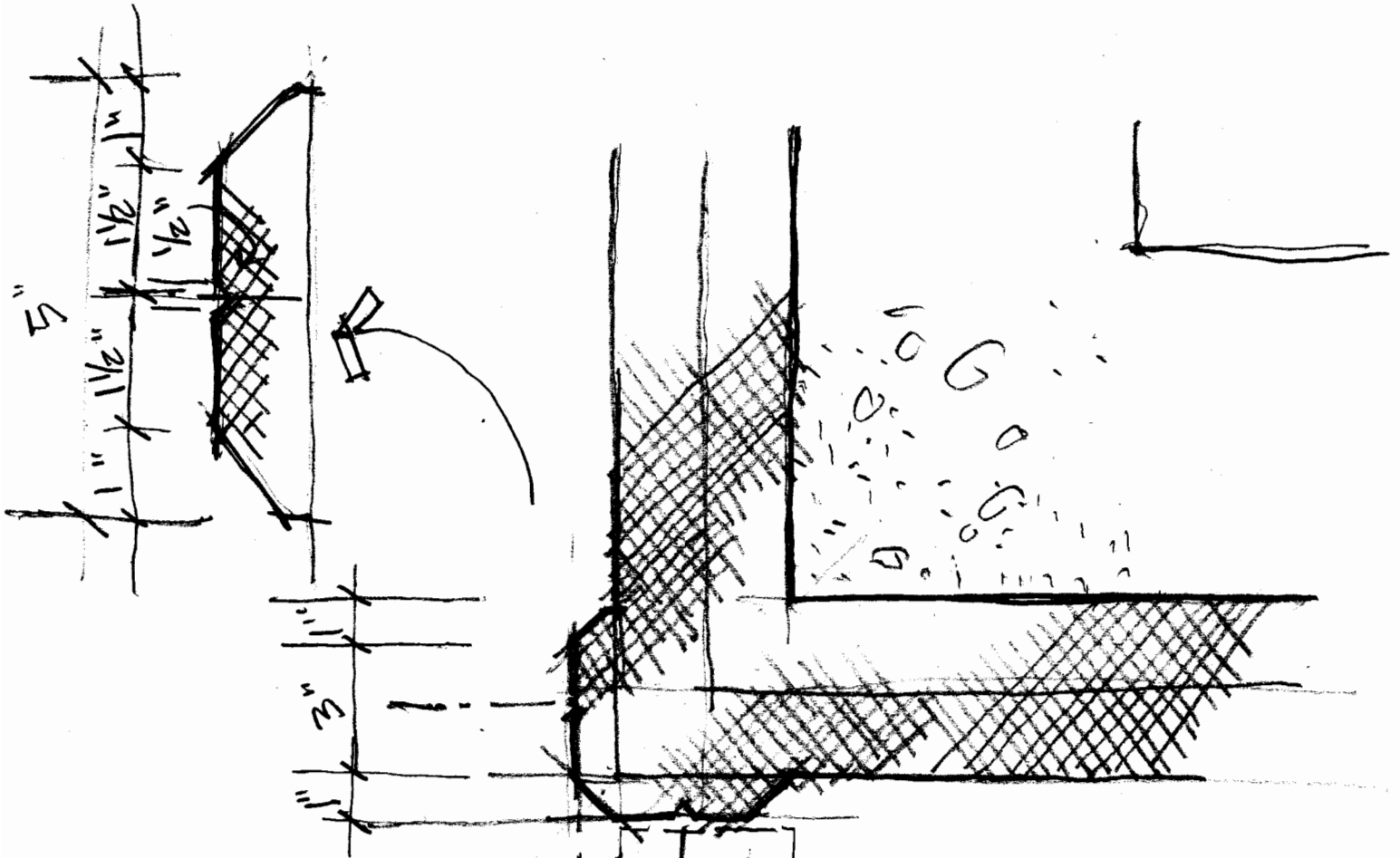
1/4" = 1'-0"

COPING



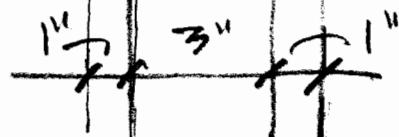
(3)

TYPICAL  
COPING  
D-1  
3" = 1'-0"



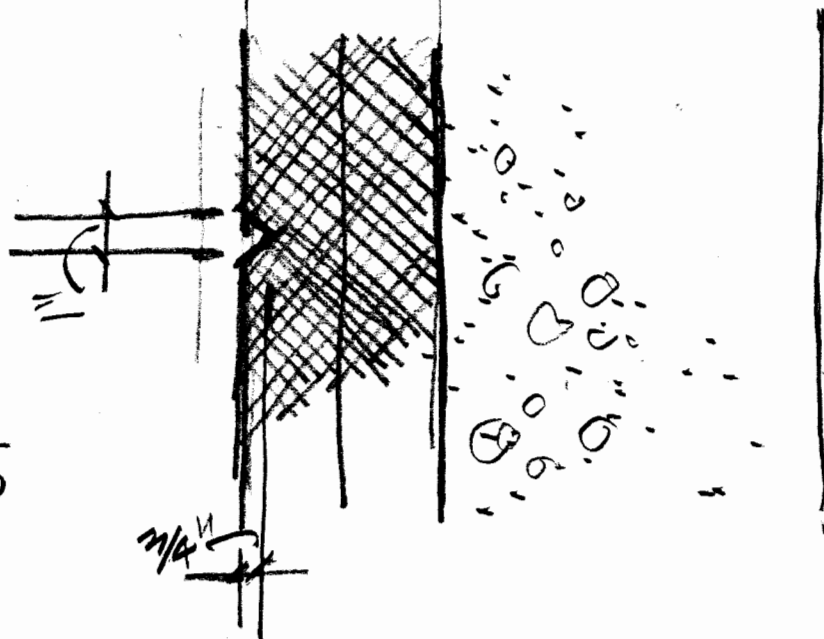
TYPICAL  
CORNER

D2-A



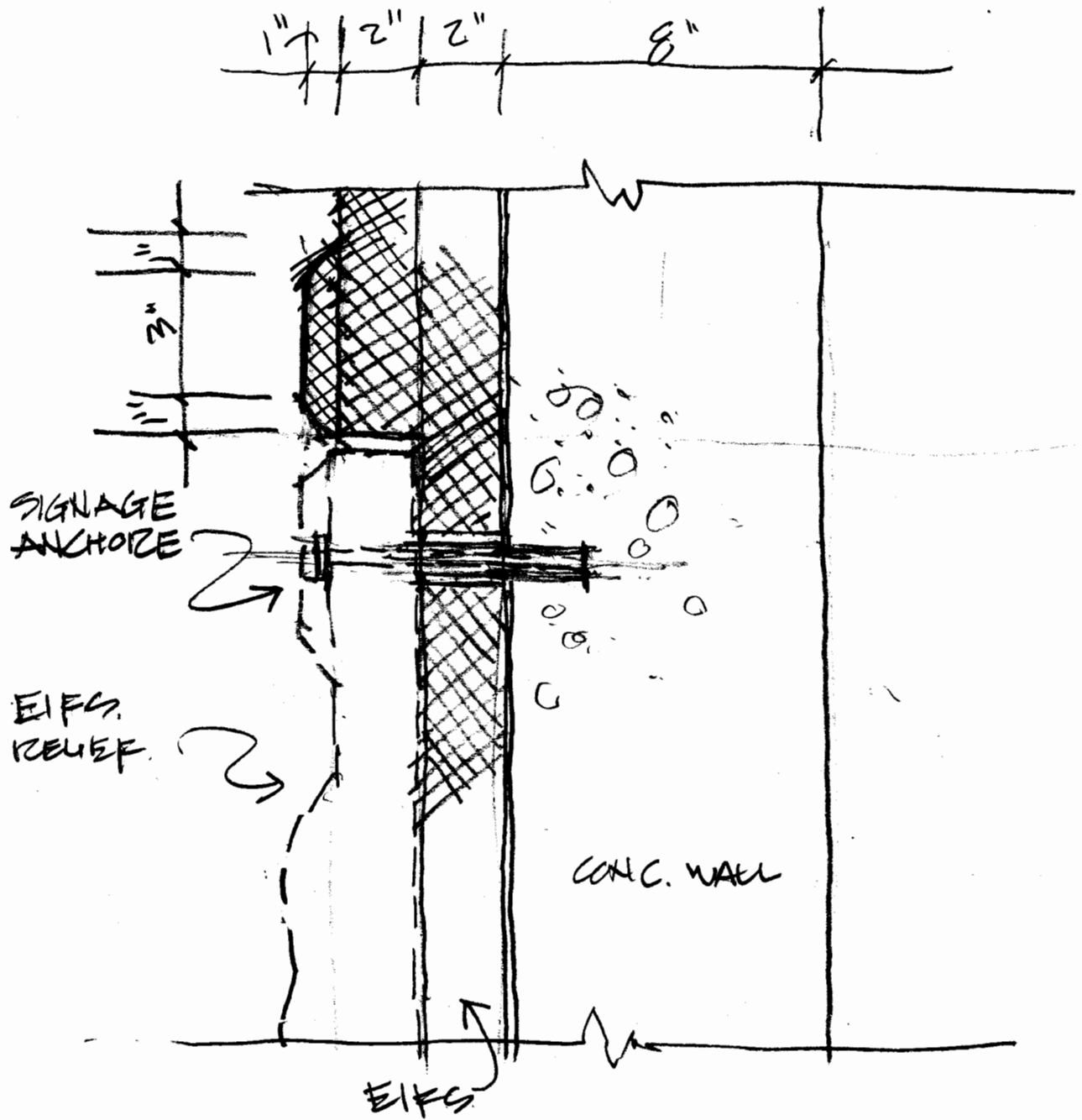
TYPICAL  
SCORE

D2-B



(4)

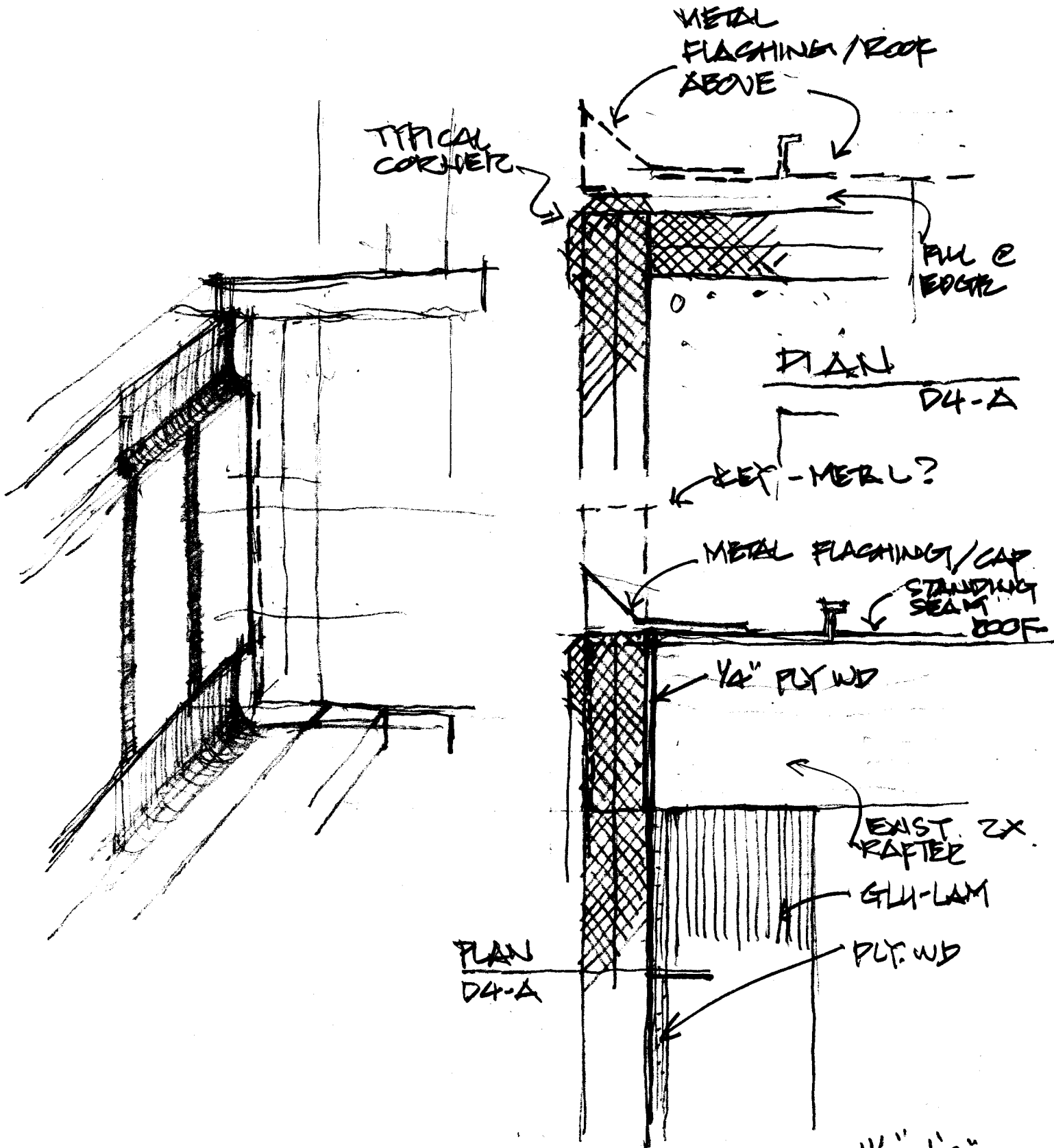
D-2  
3" = 1-0"



PLAN DETAIL  
 @ RELIEF

D-3  
 3" x 1'-0"

(5)



(6)

ROOF EDGE D-4

1 1/2" = 1'0"

SILL

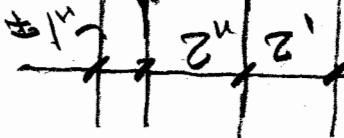
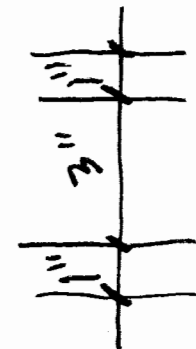
WINDOW

WINDOW  
OPENING  
ABOVE

PLAN  
DETAIL

D-5

3" = 1'-0"



(7)

